



STEEL  **ASIA**
TIBAY NG PILIPINO

RMESH

**WELDED REINFORCING MESH DESIGN GUIDELINES
FOR STRUCTURAL DESIGNERS**

	MESH DESIGN GUIDELINES FOR STRUCTURAL DESIGNERS	REV. NO.	DOC. DATE	PAGE NO.
		0	11/15/2022	1/17

DEFORMED BAR MESH (GRADES 280 & 420 MPa)

MESH TYPE	MESH GROUP CODE	SPACING (mm)	DESCRIPTION
Square Mesh	RMA	100 x 100	<i>Diameter:</i> 10 & 12mm (Deformed) <i>Grade:</i> 280 & 420 MPa <i>Material Standard:</i> PNS 49:2020 <i>Mesh Ref. Standard:</i> ASTM A184M / AASHTO M54
	RMB	150 x 150	<i>Diameter:</i> 10 & 12mm (Deformed) <i>Grade:</i> 280 & 420 MPa <i>Material Standard:</i> PNS 49:2020 <i>Mesh Ref. Standard:</i> ASTM A184M / AASHTO M54
	RMC	200 x 200	<i>Diameter:</i> 10 & 12mm (Deformed) <i>Grade:</i> 280 & 420 MPa <i>Material Standard:</i> PNS 49:2020 <i>Mesh Ref. Standard:</i> ASTM A184M / AASHTO M54
	RMD	300 x 300	<i>Diameter:</i> 10 & 12mm (Deformed) <i>Grade:</i> 280 & 420 MPa <i>Material Standard:</i> PNS 49:2020 <i>Mesh Ref. Standard:</i> ASTM A184M / AASHTO M54
Rectangular Mesh	RME	100 x 200	<i>Diameter:</i> 10 & 12mm (Deformed) <i>Grade:</i> 280 & 420 MPa <i>Material Standard:</i> PNS 49:2020 <i>Mesh Ref. Standard:</i> ASTM A184M / AASHTO M54
	RMF	200 x 300	<i>Diameter:</i> 10 & 12mm (Deformed) <i>Grade:</i> 280 & 420 MPa <i>Material Standard:</i> PNS 49:2020 <i>Mesh Ref. Standard:</i> ASTM A184M / AASHTO M54
Standard Sheet Sizes	2.50m x 6.00m, 2.50m x 9.00m, 1.80m x 6.00m		
Note	ASTM A184M governs the specifications for deformed bar mesh.		

	MESH DESIGN GUIDELINES FOR STRUCTURAL DESIGNERS	REV. NO.	DOC. DATE	PAGE NO.
		0	11/15/2022	2/17

DEFORMED WIRE MESH (GRADE 550 MPa)

MESH TYPE	MESH GROUP CODE	SPACING (mm)	DESCRIPTION
Square Mesh	WMA	100 x 100	<i>Diameter:</i> 6, 8, 10 & 12mm (Deformed) <i>Grade:</i> 550 MPa <i>Material Standard:</i> ASTM A1064M / AASHTO M336 <i>Mesh Ref. Standard:</i> ASTM A1064M / AASHTO M336
	WMB	150 x 150	<i>Diameter:</i> 6, 8, 10 & 12mm (Deformed) <i>Grade:</i> 550 MPa <i>Material Standard:</i> ASTM A1064M / AASHTO M336 <i>Mesh Ref. Standard:</i> ASTM A1064M / AASHTO M336
	WMC	200 x 200	<i>Diameter:</i> 6, 8, 10 & 12mm (Deformed) <i>Grade:</i> 550 MPa <i>Material Standard:</i> ASTM A1064M / AASHTO M336 <i>Mesh Ref. Standard:</i> ASTM A1064M / AASHTO M336
	WMD	300 x 300	<i>Diameter:</i> 8, 10 & 12mm (Deformed) <i>Grade:</i> 550 MPa <i>Material Standard:</i> ASTM A1064M / AASHTO M336 <i>Mesh Ref. Standard:</i> ASTM A1064M / AASHTO M336
Rectangular Mesh	WME	100 x 200	<i>Diameter:</i> 6, 8, 10 & 12mm (Deformed) <i>Grade:</i> 550 MPa <i>Material Standard:</i> ASTM A1064M / AASHTO M336 <i>Mesh Ref. Standard:</i> ASTM A1064M / AASHTO M336
	WMF	200 x 300	<i>Diameter:</i> 6, 8, 10 & 12mm (Deformed) <i>Grade:</i> 550 MPa <i>Material Standard:</i> ASTM A1064M / AASHTO M336 <i>Mesh Ref. Standard:</i> ASTM A1064M / AASHTO M336

Standard Sheet Sizes	2.50m x 6.00m, 2.50m x 9.00m, 1.80m x 6.00m
Note	ASTM A1064M supersedes the following standards: - ASTM A82M, Specification for Steel Wire, Plain, for Concrete Reinforcement; - ASTM A185M, Specification for Steel Welded Wire Reinforcement, Plain, for Concrete; - ASTM A496M, Specification for Steel Wire, Deformed, for Concrete Reinforcement; and, - ASTM A497M, Specification for Steel Welded Wire Reinforcement, Deformed, for Concrete

	MESH DESIGN GUIDELINES FOR STRUCTURAL DESIGNERS	REV. NO.	DOC. DATE	PAGE NO.
		0	11/15/2022	3/17

RMESH TECHNICAL SPECIFICATIONS AND PRODUCT CODES

	MESH DESIGN GUIDELINES FOR STRUCTURAL DESIGNERS	REV. NO.	DOC. DATE	PAGE NO.
		0	11/15/2022	4/17

**DEFORMED BAR MESH (GRADES 280 & 420 MPa)
RMESH TECHNICAL SPECIFICATIONS**

Mesh Code	Grade (MPa)	Line Bar		Cross Bar		Unit Area (kg/m ²)		
		Dia (mm)	Spacing (mm)	Dia (mm)	Spacing (mm)	2.50m x 6.00m	2.50m x 9.00m	1.80m x 6.00m

SQUARE MESHES

"A" Series								
RMA2812	280	12	100	12	100	17.26	17.31	17.12
RMA4212	420	12	100	12	100	17.26	17.31	17.12
RMA2810	280	10	100	10	100	11.99	12.02	11.89
RMA4210	420	10	100	10	100	11.99	12.02	11.89
"B" Series								
RMB2812	280	12	150	12	150	11.46	11.50	11.20
RMB4212	420	12	150	12	150	11.46	11.50	11.20
RMB2810	280	10	150	10	150	7.96	7.99	7.78
RMB4210	420	10	150	10	150	7.96	7.99	7.78
"C" Series								
RMC2812	280	12	200	12	200	8.55	8.60	8.24
RMC4212	420	12	200	12	200	8.55	8.60	8.24
RMC2810	280	10	200	10	200	5.94	5.98	5.72
RMC4210	420	10	200	10	200	5.94	5.98	5.72
"D" Series								
RMD2812	280	12	300	12	300	5.65	5.70	5.28
RMD4212	420	12	300	12	300	5.65	5.70	5.28
RMD2810	280	10	300	10	300	3.93	3.96	3.67
RMD4210	420	10	300	10	300	3.93	3.96	3.67

RECTANGULAR MESHES

"E" Series								
RME2812	280	12	100	12	200	12.82	12.87	12.68
RME4212	420	12	100	12	200	12.82	12.87	12.68
RME2810	280	10	100	10	200	8.91	8.94	8.81
RME4210	420	10	100	10	200	8.91	8.94	8.81
"F" Series								
RMF2812	280	12	200	12	300	7.07	7.12	6.76
RMF4212	420	12	200	12	300	7.07	7.12	6.76
RMF2810	280	10	200	10	300	4.92	4.95	4.70
RMF4210	420	10	200	10	300	4.92	4.95	4.70

	MESH DESIGN GUIDELINES FOR STRUCTURAL DESIGNERS	REV. NO.	DOC. DATE	PAGE NO.
		0	11/15/2022	5/17

**DEFORMED WIRE MESH (GRADE 550 MPa)
RMESH TECHNICAL SPECIFICATIONS**


Mesh Code	Grade (MPa)	Line Wire		Cross Wire		Unit Area (kg/m ²)		
		Dia (mm)	Spacing (mm)	Dia (mm)	Spacing (mm)	2.50m x 6.00m	2.50m x 9.00m	1.80m x 6.00m

SQUARE MESHES

"A" Series								
WMA5512	550	12	100	12	100	17.26	17.31	17.12
WMA5510	550	10	100	10	100	11.99	12.02	11.89
WMA5508	550	8	100	8	100	7.66	7.68	7.60
WMA5506	550	6	100	6	100	4.31	4.33	4.28
"B" Series								
WMB5512	550	12	150	12	150	11.46	11.50	11.20
WMB5510	550	10	150	10	150	7.96	7.99	7.78
WMB5508	550	8	150	8	150	5.08	5.10	4.97
WMB5506	550	6	150	6	150	2.86	2.88	2.80
"C" Series								
WMC5512	550	12	200	12	200	8.55	8.60	8.24
WMC5510	550	10	200	10	200	5.94	5.98	5.72
WMC5508	550	8	200	8	200	3.80	3.82	3.66
WMC5506	550	6	200	6	200	2.14	2.15	2.06
"D" Series								
WMD5512	550	12	300	12	300	5.65	5.70	5.28
WMD5510	550	10	300	10	300	3.93	3.96	3.67
WMD5508	550	8	300	8	300	2.51	2.53	2.34

RECTANGULAR MESHES

"E" Series								
WME5512	550	12	100	12	200	12.82	12.87	12.68
WME5510	550	10	100	10	200	8.91	8.94	8.81
WME5508	550	8	100	8	200	5.69	5.71	5.63
WME5506	550	6	100	6	200	3.14	3.22	3.17
"F" Series								
WMF5512	550	12	200	12	300	7.07	7.12	6.76
WMF5510	550	10	200	10	300	4.92	4.95	4.70
WMF5508	550	8	200	8	300	3.14	3.16	3.00
WMF5506	550	6	200	6	300	1.77	1.78	1.69

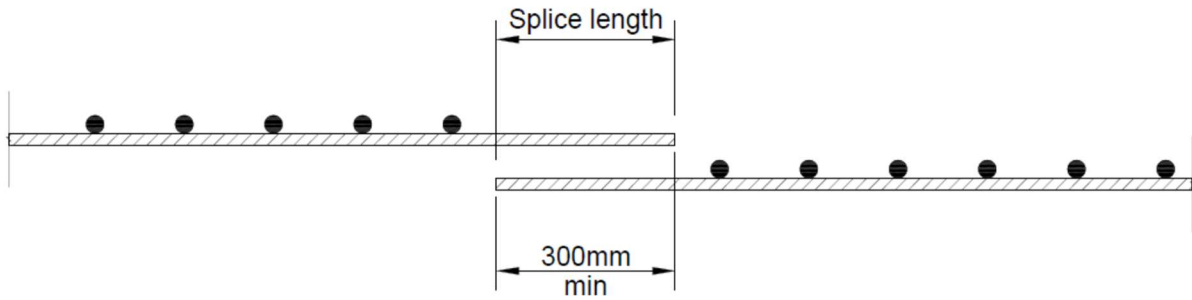
 STEEL ASIA TIBAY NG PILIPINO	MESH DESIGN GUIDELINES FOR STRUCTURAL DESIGNERS	REV. NO.	DOC. DATE	PAGE NO.
		0	11/15/2022	6/17

RMESH LAP SPLICING GUIDE

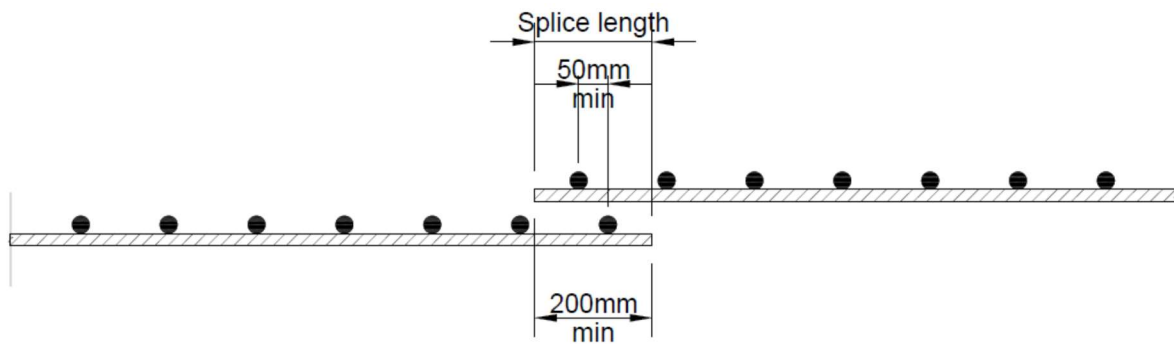
	MESH DESIGN GUIDELINES FOR STRUCTURAL DESIGNERS	REV. NO.	DOC. DATE	PAGE NO.
		0	11/15/2022	7/17

LAP SPLICING GUIDE

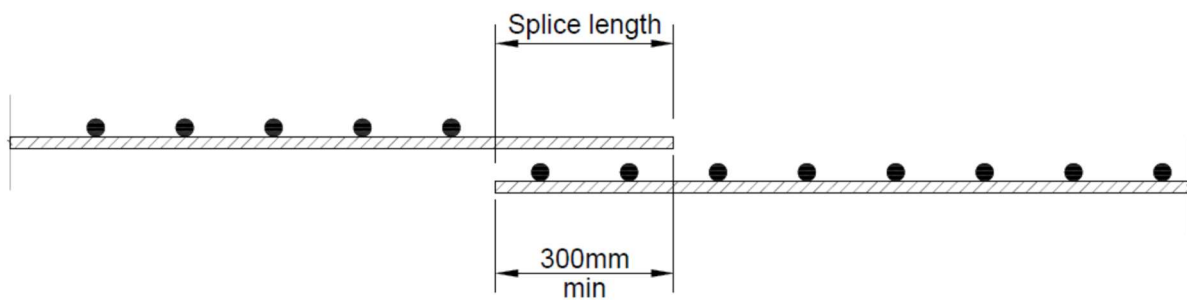
TYPE 1 Splicing with no line wires/bars on both sheets*



Type 2 Splicing with both sheets having line wires/bars*



TYPE 3 Splicing with no line wires/bars on one sheet

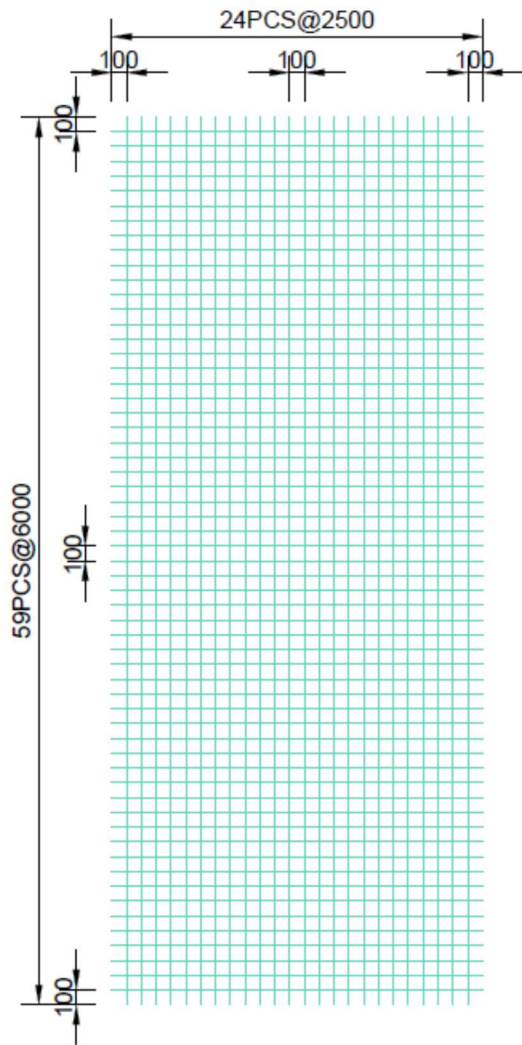


*As per the National Structural Code of the Philippines (NSCP) 2015, Section 425 Reinforcement Details

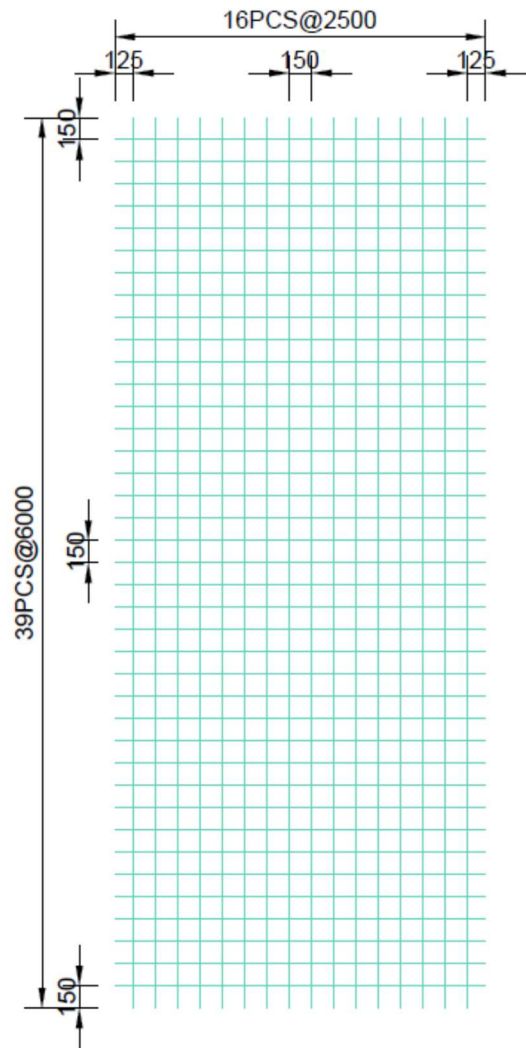
	MESH DESIGN GUIDELINES FOR STRUCTURAL DESIGNERS	REV. NO.	DOC. DATE	PAGE NO.
		0	11/15/2022	8/17

RMESH STANDARD SHEETS DRAWING REFERENCES

**STANDARD SHEET DRAWINGS
2.50m x 6.00m**



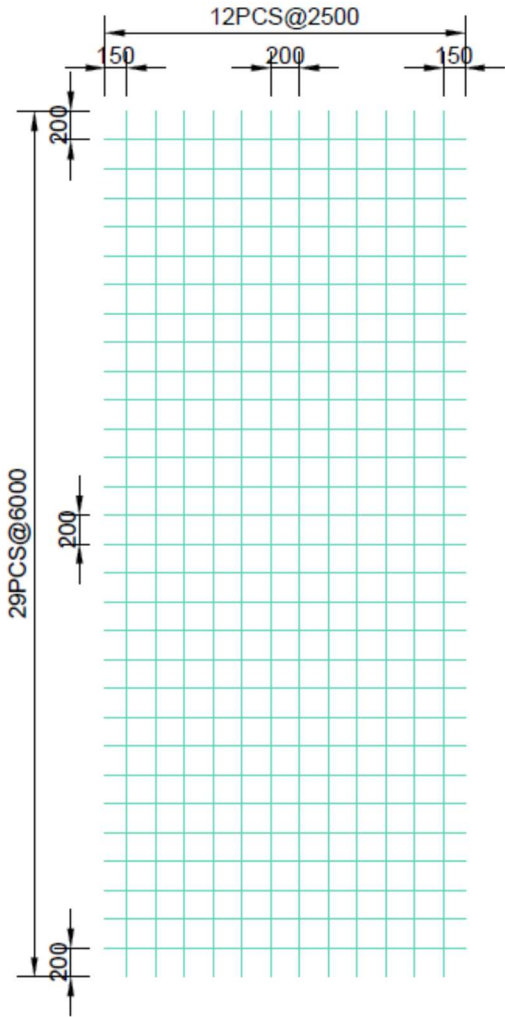
"A" Series



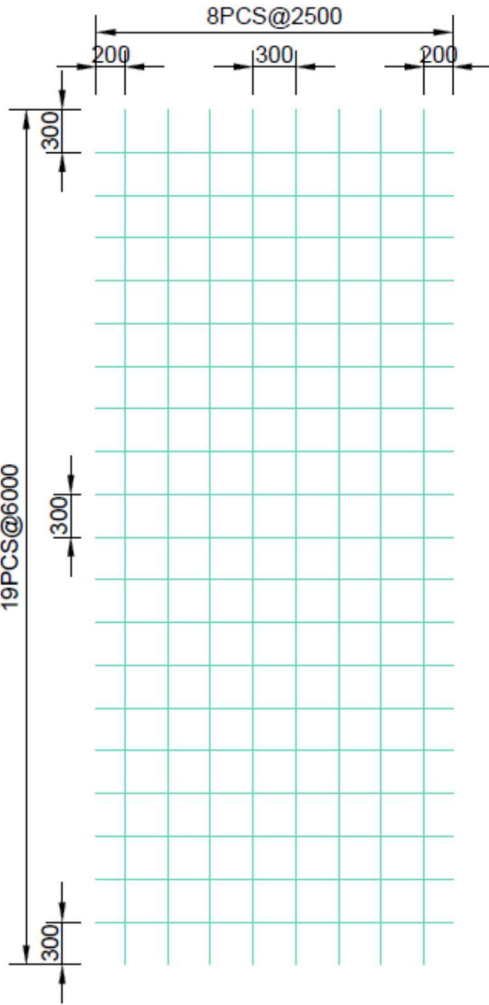
"B" Series

	MESH DESIGN GUIDELINES FOR STRUCTURAL DESIGNERS	REV. NO.	DOC. DATE	PAGE NO.
		0	11/15/2022	10/17

**STANDARD SHEET DRAWINGS
2.50m x 6.00m**



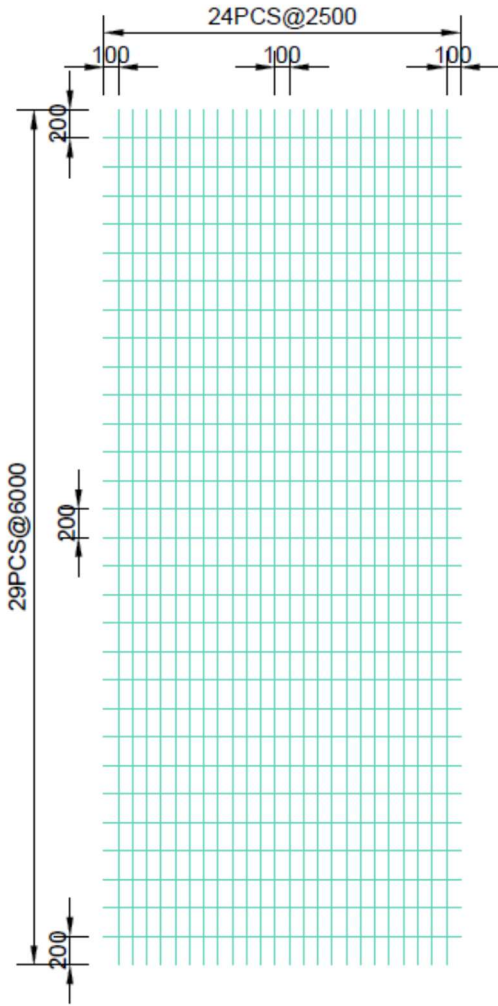
“C” Series



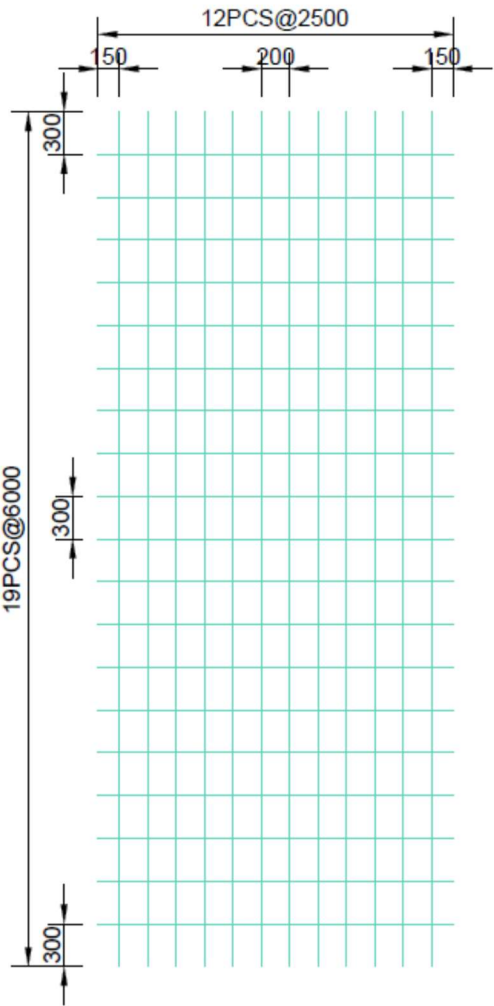
“D” Series

	MESH DESIGN GUIDELINES FOR STRUCTURAL DESIGNERS	REV. NO.	DOC. DATE	PAGE NO.
		0	11/15/2022	11/17

**STANDARD SHEET DRAWINGS
2.50m x 6.00m**

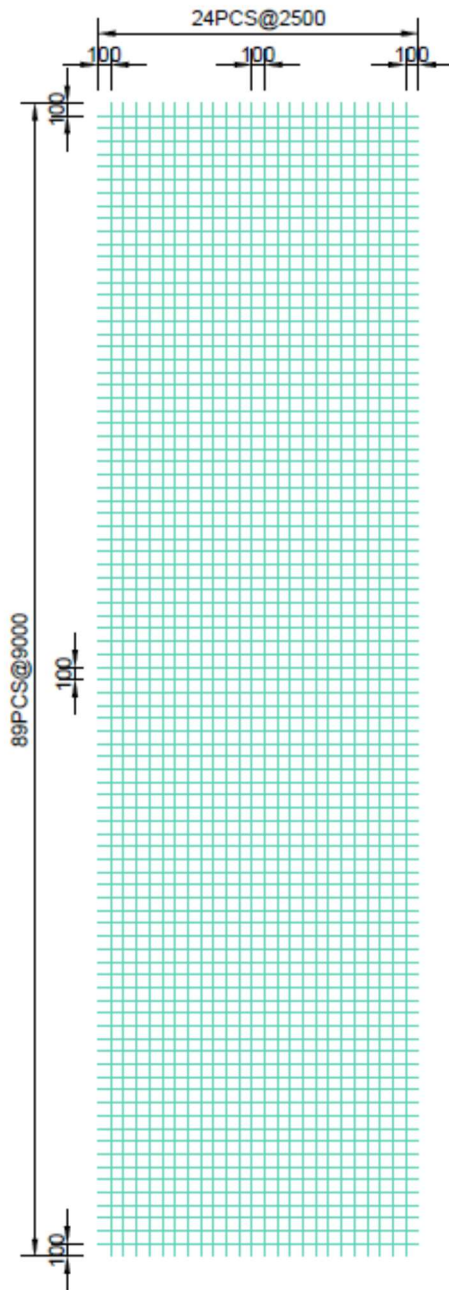


"E" Series

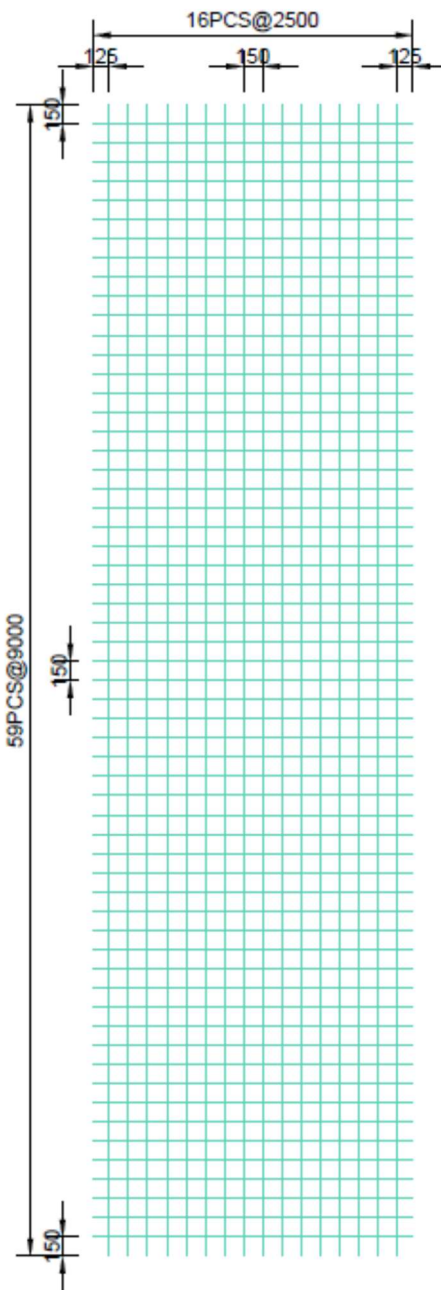


"F" Series

**STANDARD SHEET DRAWINGS
2.50m x 9.00m**

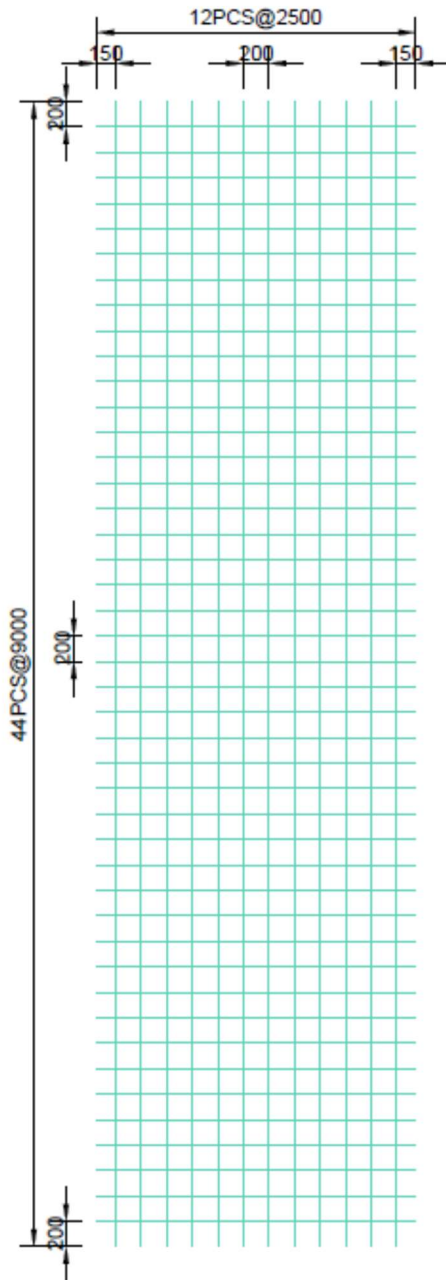


"A" Series

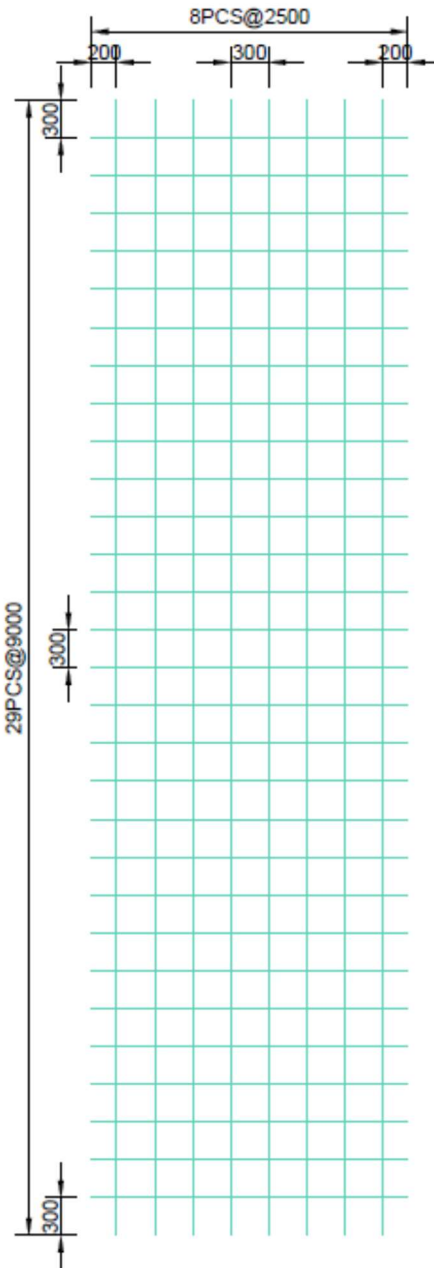


"B" Series

**STANDARD SHEET DRAWINGS
2.50m x 9.00m**

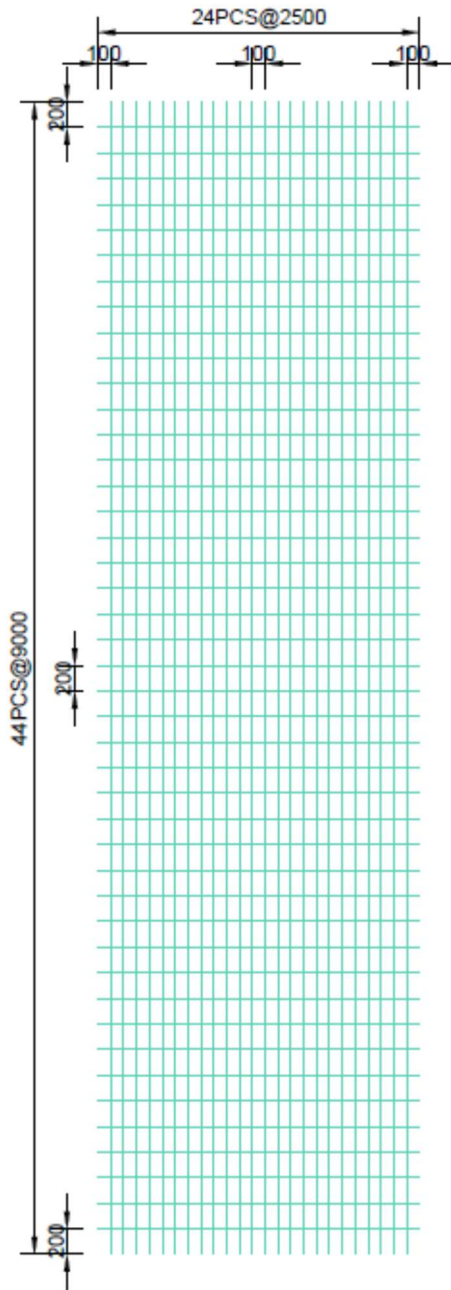


"C" Series

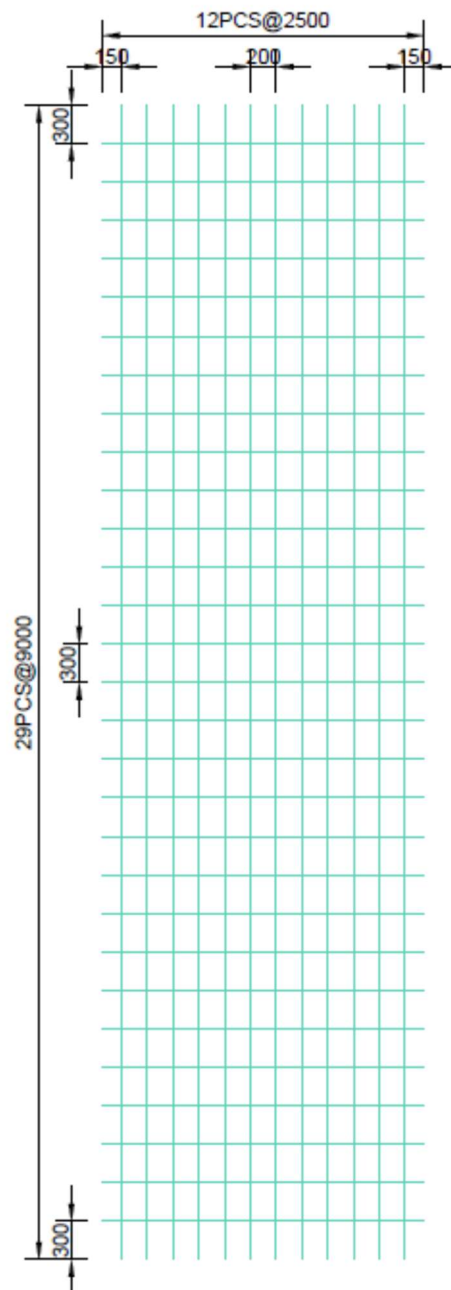


"D" Series

**STANDARD SHEET DRAWINGS
2.50m x 9.00m**

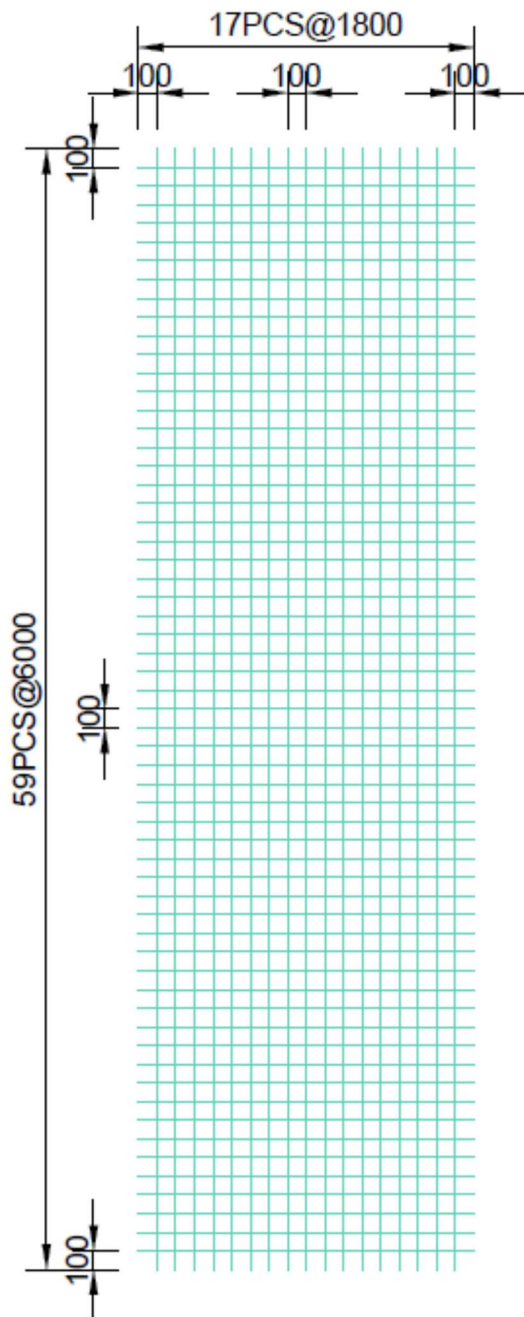


"E" Series

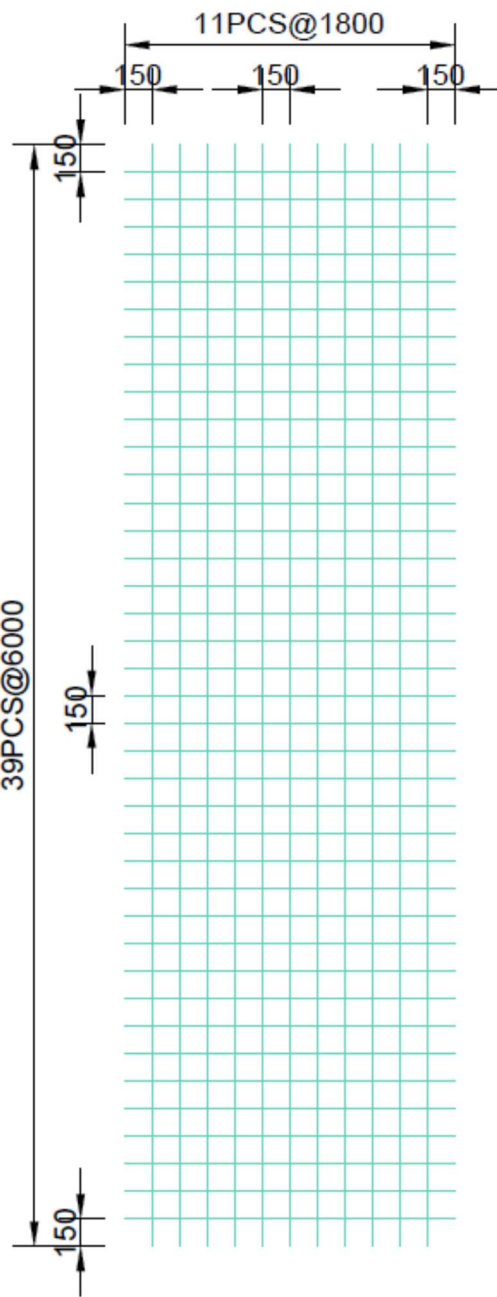


"F" Series

**STANDARD SHEET DRAWINGS
1.80m x 6.00m**

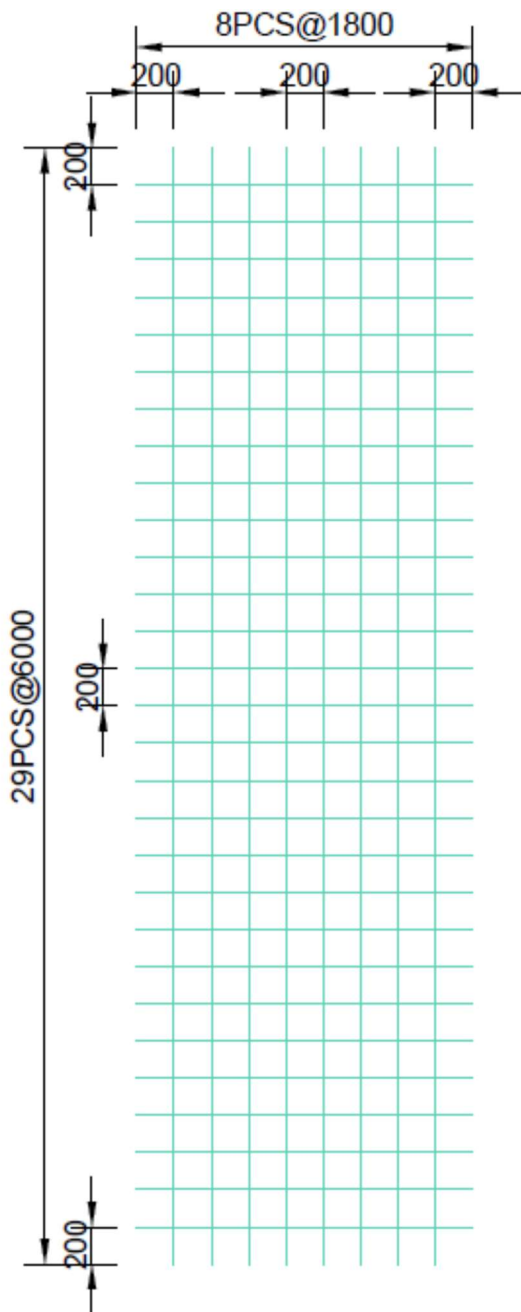


"A" Series

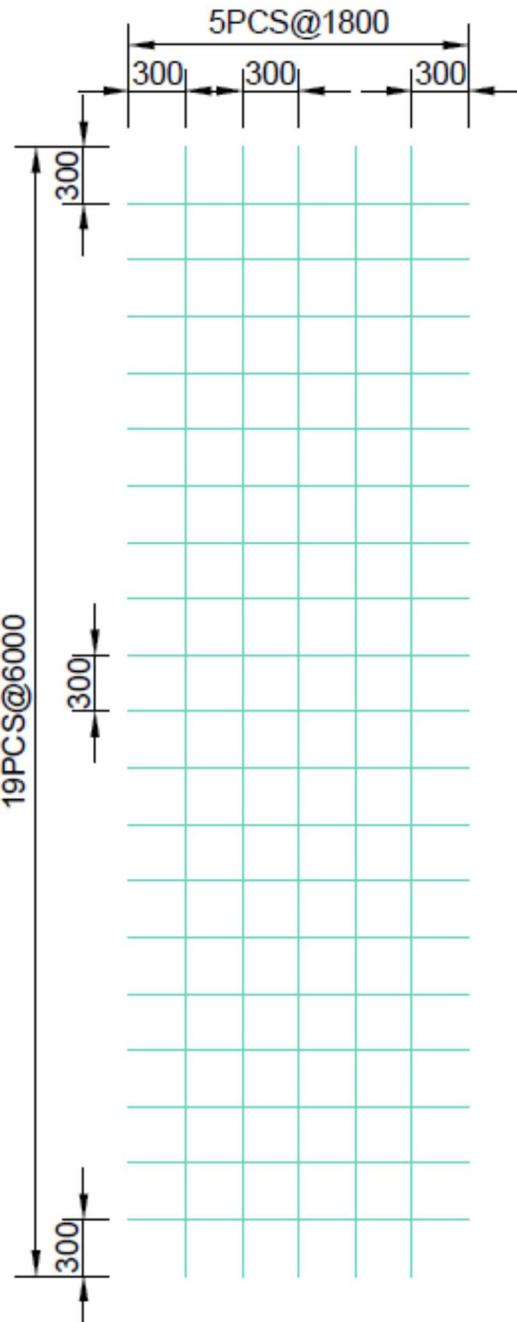


"B" Series

**STANDARD SHEET DRAWINGS
1.80m x 6.00m**

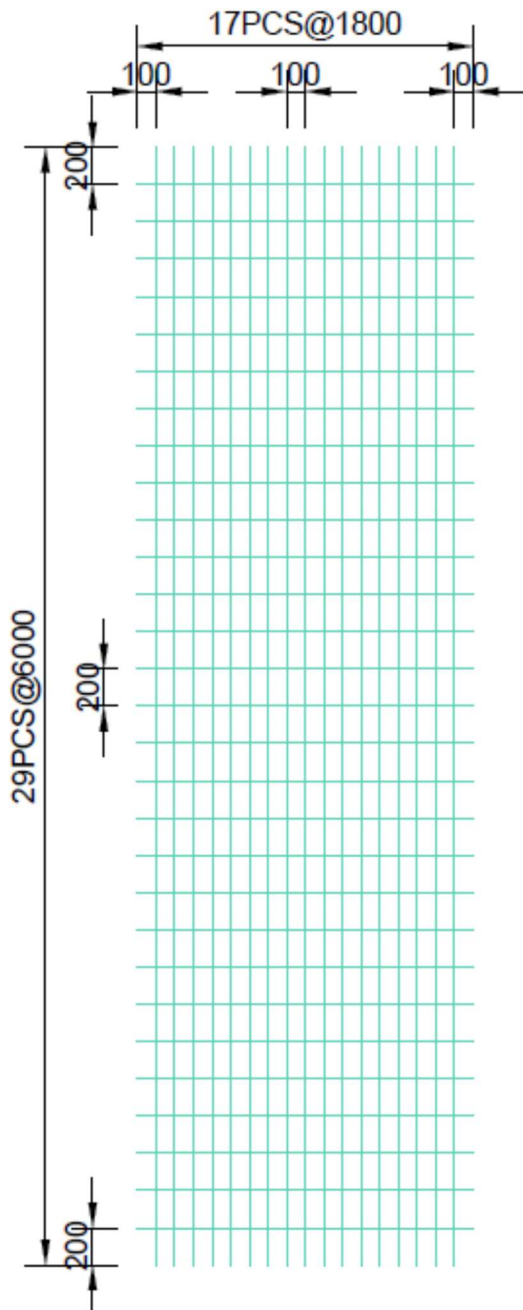


"C" Series

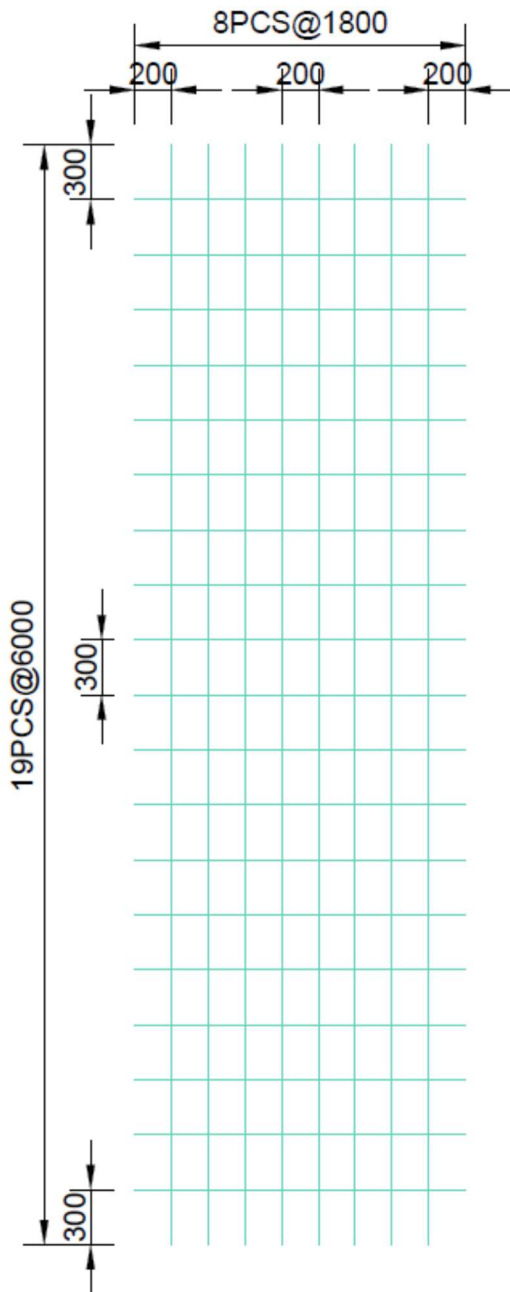


"D" Series

**STANDARD SHEET DRAWINGS
1.80m x 6.00m**



"E" Series



"F" Series